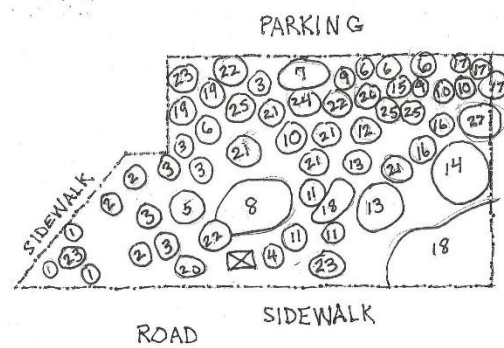


MONOCOT GARDEN

North Garden



COMMON NAME

BOTANICAL NAME:

FAMILY:

| | | |
|--------------------------|---|----------------|
| 1. Blue Eye Grass | <i>Sisyrinchium angustifolium</i> 'Lucerne' | Iridaceae |
| 2. Prairie Grass | <i>Sporobolus Heterolepis</i> | Poaceae |
| 3. Asiatic Lily | <i>Lilium asiatic</i> | Liliaceae |
| 4. Snap Dragon | <i>Antirrhinum majus</i> * | Plantaginaceae |
| 5. Yucca variegated | <i>Yucca gloriosa</i> 'Variegata' | Yuccaceae |
| 6. Acidanthera bicolor | <i>Gladiolus mureilae</i> | Iridaceae |
| 7. Switch Grass | <i>Panicum virgatum</i> | Poaceae |
| 8. Lily of the Nile | <i>Agapanthus africanus</i> | Amaryllidaceae |
| 9. Cana mix | <i>Cana indica</i> | Cannaceae |
| 10. Butter Fly Weed | <i>Asclepias tuberosa</i> * | Apocynaceae |
| 11. Society Garlic | <i>Tulbaghia violacea</i> | Amaryllidaceae |
| 12. Coconut Palm | <i>Cocos nucifera</i> | Arecaceae |
| 13. Indian Grass | <i>Sorghastrum nutans</i> | Poaceae |
| 14. Sago Palm | <i>Cycas revoluta</i> | Cycadaceae |
| 15. Virginia Spiderwort | <i>Tradescantia virginiana</i> | Acanthaceae |
| 16. Little Blue Stem | <i>Schizachyrium scoparium</i> | Poaceae |
| 17. Black Mondo Grass | <i>Ophiopogon planiscapus</i> 'Nigrescens' | Asparagaceae |
| 18. Sedum Groundcover | <i>Sedum kamtschaticum</i> | Crassulaceae |
| 19. Daffodil mix | <i>Narcissus</i> | Amaryllidaceae |
| 20. Hyacinth mix | <i>Hyacinthus orientalis</i> | Asparagaceae |
| 21. Crocosmia | <i>Crocosmia x crocosmiiflora</i> 'Lucifer' | Iridaceae |
| 22. Dwarf Iris mix | <i>Iris cristata</i> | Iridaceae |
| 23. Cooper Ice Plant | <i>Delosperma cooperi</i> | Aizoaceae |
| 24. Red Cordyline | <i>Cordyline australis</i> 'Red Star' | Asparagaceae |
| 25. Dwarf Stone Crop Red | <i>Sedum telephium</i> 'Dark Magic' | Crassulaceae |
| 26. Stone Crop | <i>Hylotelephium spectabile</i> 'Autumn Joy' | Crassulaceae |
| 27. Day Lily | <i>Hemerocallis hybrid</i> 'Buttered Popcorn' | Asphodelaceae |

*Not a Monocot